



# TWYFORD GRAVELS

- Red Varieties include Merlot, Cabernet Sauvignon, Syrah.
- Cabernet Franc to be re-planted with Syrah this year. 3.1ha
- Varietal Mix: Merlot - 40%  
Syrah - 38%  
Cabernet Sauvignon - 22%















# Gimblett Gravels

- Free draining stony gravels.
- Gives great control over vigour.
- Irrigation is vital.
- Scheduling and monitoring water status has got easier with some technology.
- Constant monitoring of soil moisture at two depths as opposed to a reading twice a week.

## Gimblett Gravels-

- New irrigation controller-cheapest we have ever purchased with more features.
- Reliability is vital
- Easy to use
- Water consents are being carefully monitored/restricted, highlighting the need to conserve water





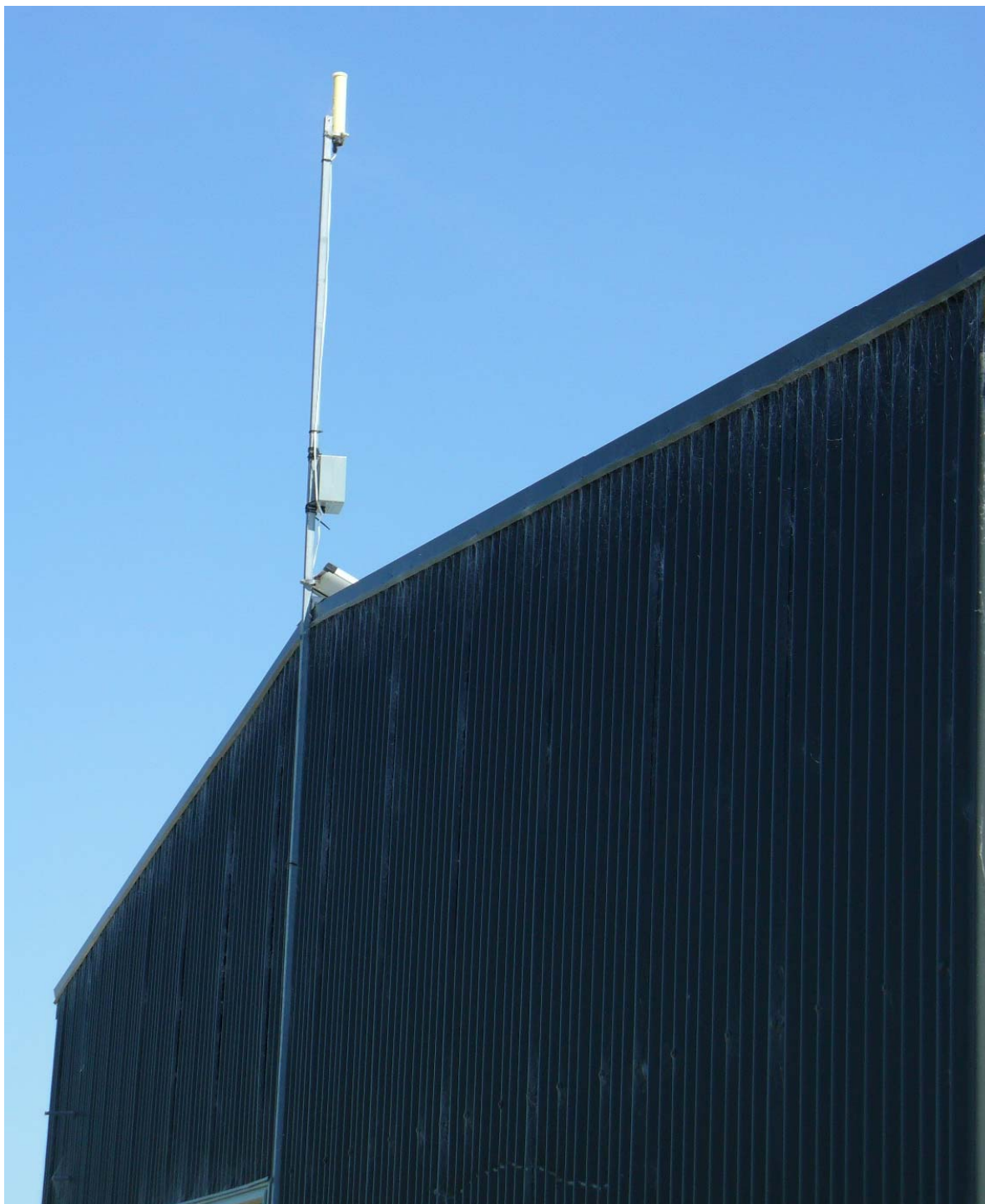
# Indigo Systems Monitoring

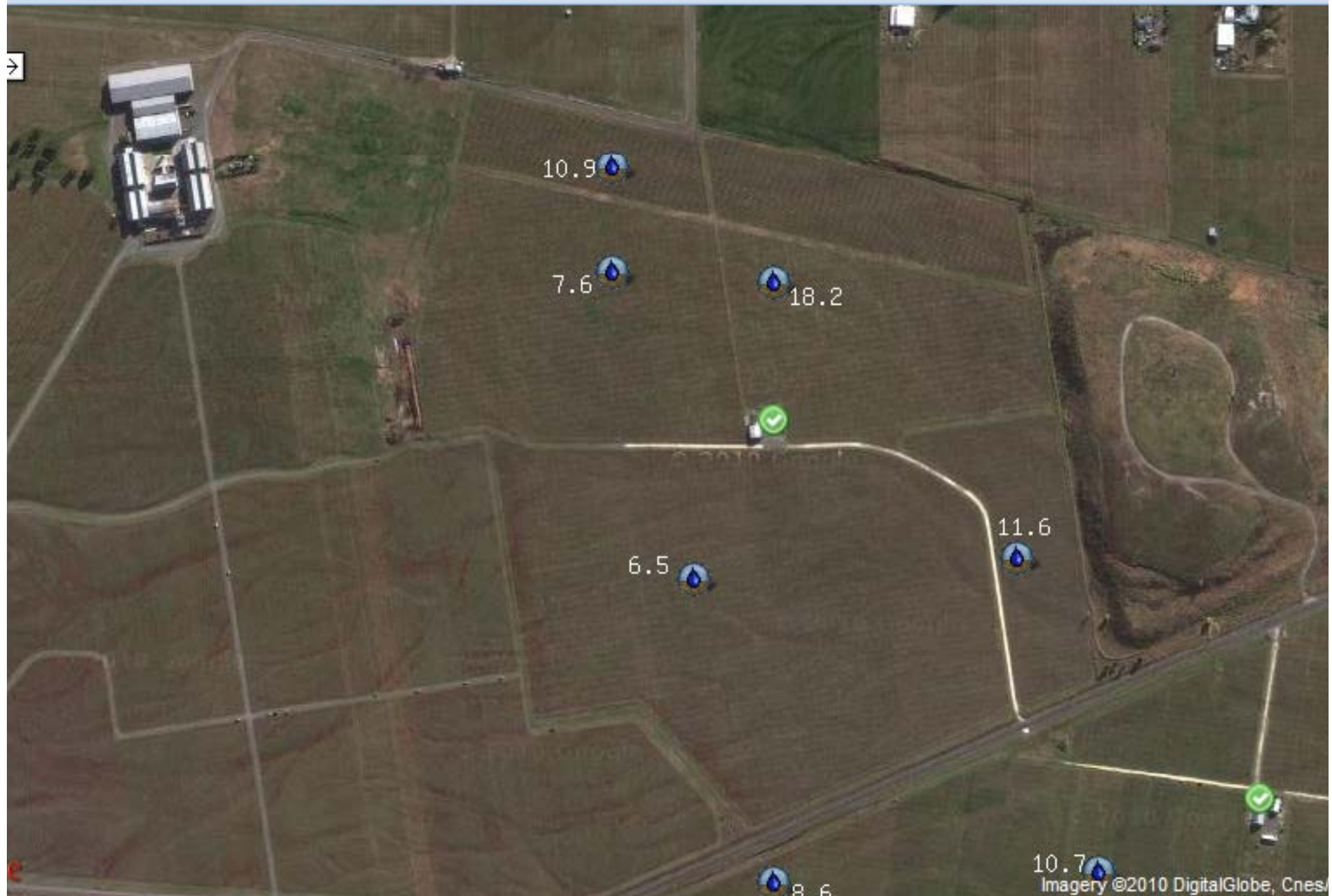
- Remote realtime monitoring
- Wireless radio technology (telemetry)
- Base station relays data to a website-easily accessible
- Constant reading as opposed to a number taken once or twice a week
- Also using it for windmill, temperature and wind data.











Graphing Window for: V3

Prev 24 Hrs **7 days** 30 days Custom Next Now

Show Legend **Moisture** Temperature

M  
o  
i  
s  
t  
u  
r  
e  
[  
V  
W  
C  
]



Date

18:47:28  
17/11/10

13.9

8.9

10.8

Imagery ©2010 DigitalGlobe, Cnes/Spot Image

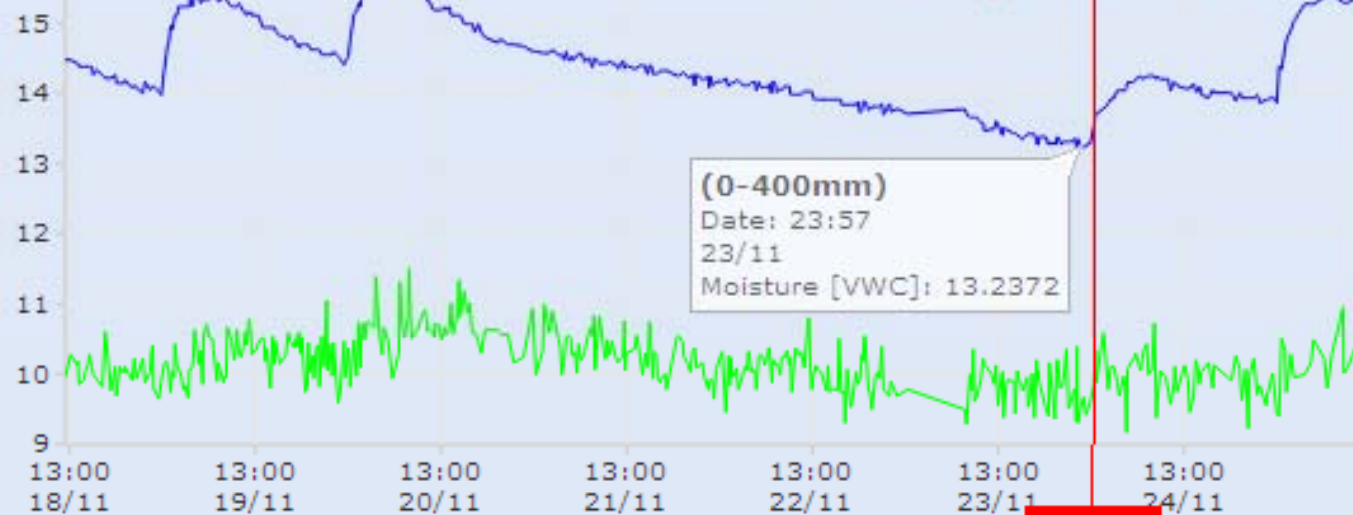


### Graphing Window for: TG6

Prev 24 Hrs **7 days** 30 days Custom Next Now

Show Legend **Moisture** Temperature

M  
o  
i  
s  
t  
u  
r  
e  
[  
V  
W  
C  
]



Date

01:15:28  
24/11/10

13.9

8.9

10.8

Imagery ©2010 DigitalGlobe, Cnes/Spot Image, 4.2



Microsoft PowerPoint ...

WebMesh Portal - Go...



10.3

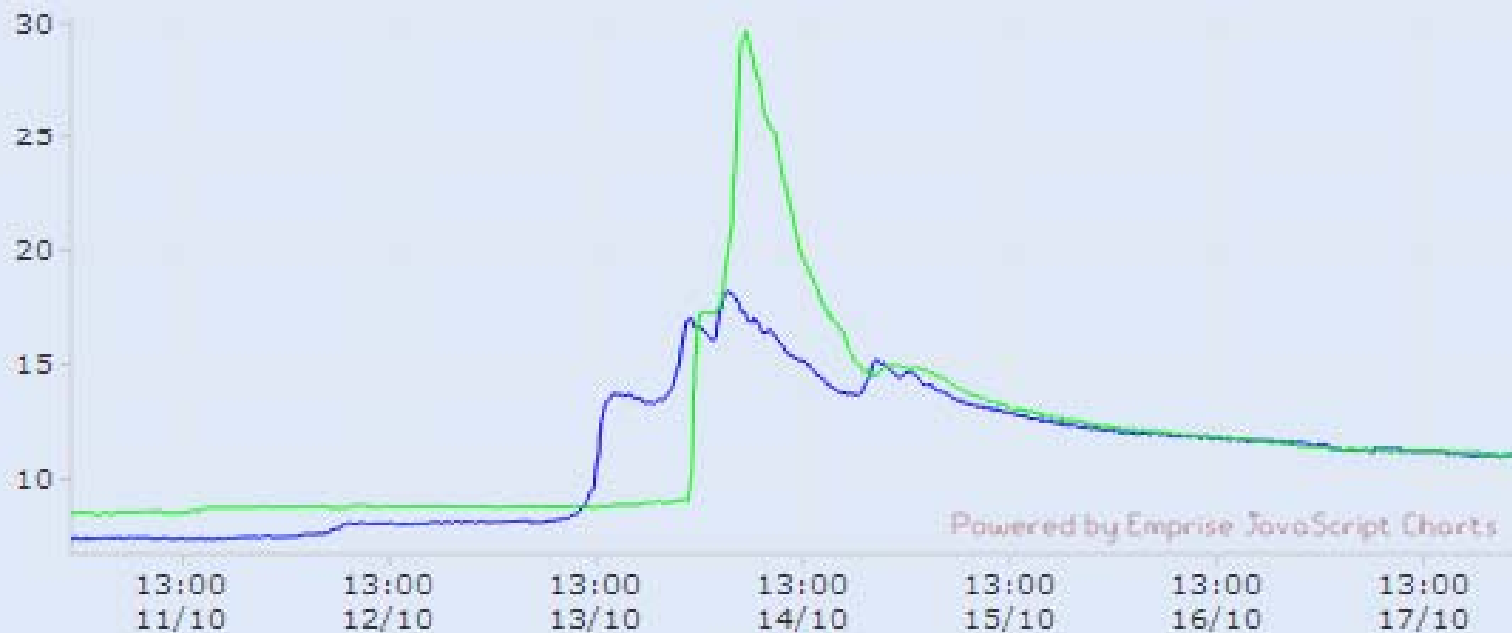
### Graphing Window for: TG2



Prev 24 Hrs 7 days 30 days **Custom** Next Now

Show Legend **Moisture** Temperature

**M  
o  
i  
s  
t  
u  
r  
e  
[  
V  
W  
C  
]**



8.9

10.8





