



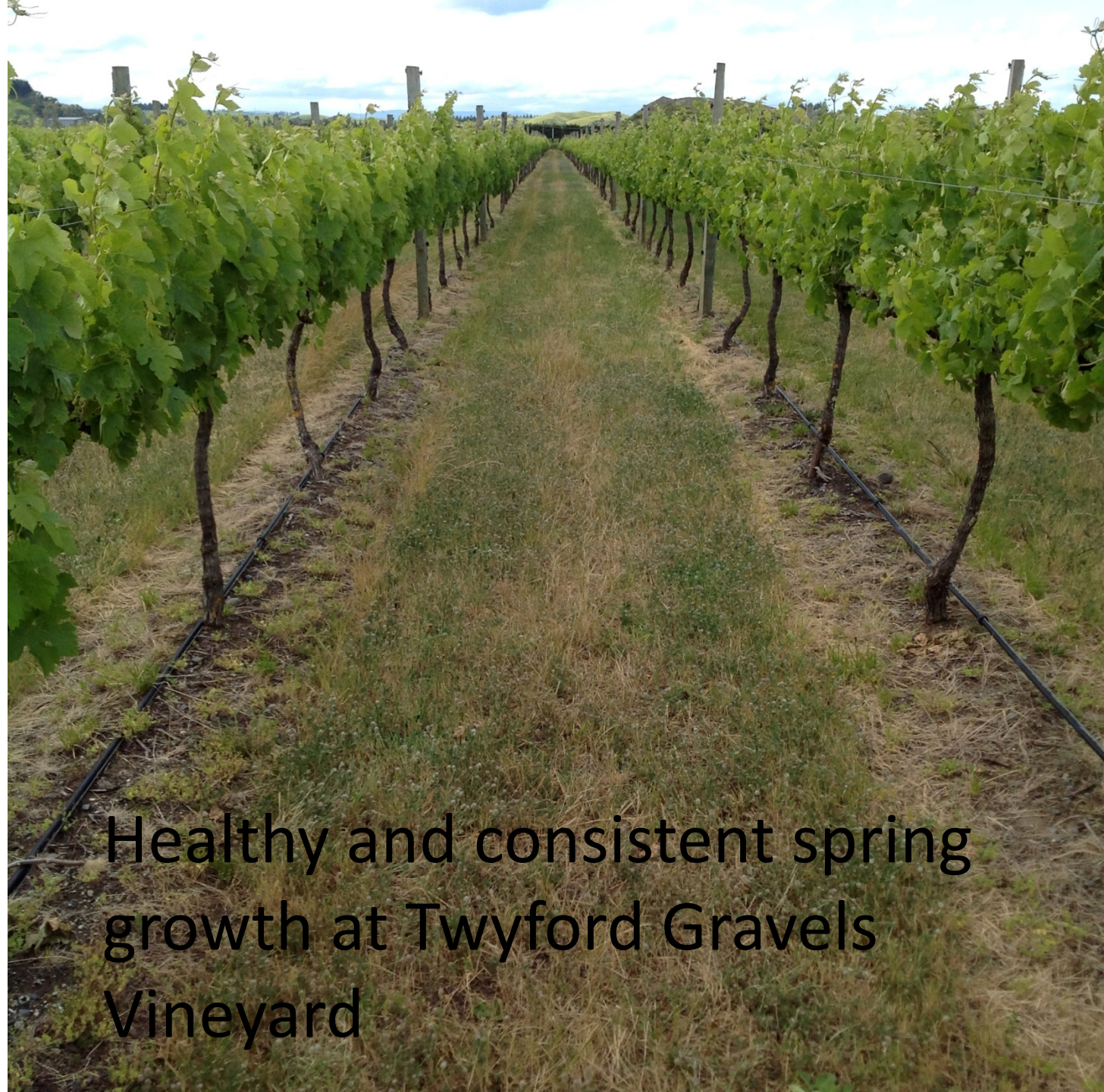
TWYFORD GRAVELS



Three of our key staff, Bernadette, Rhys and Justin at the Twyford Gravels Vineyard

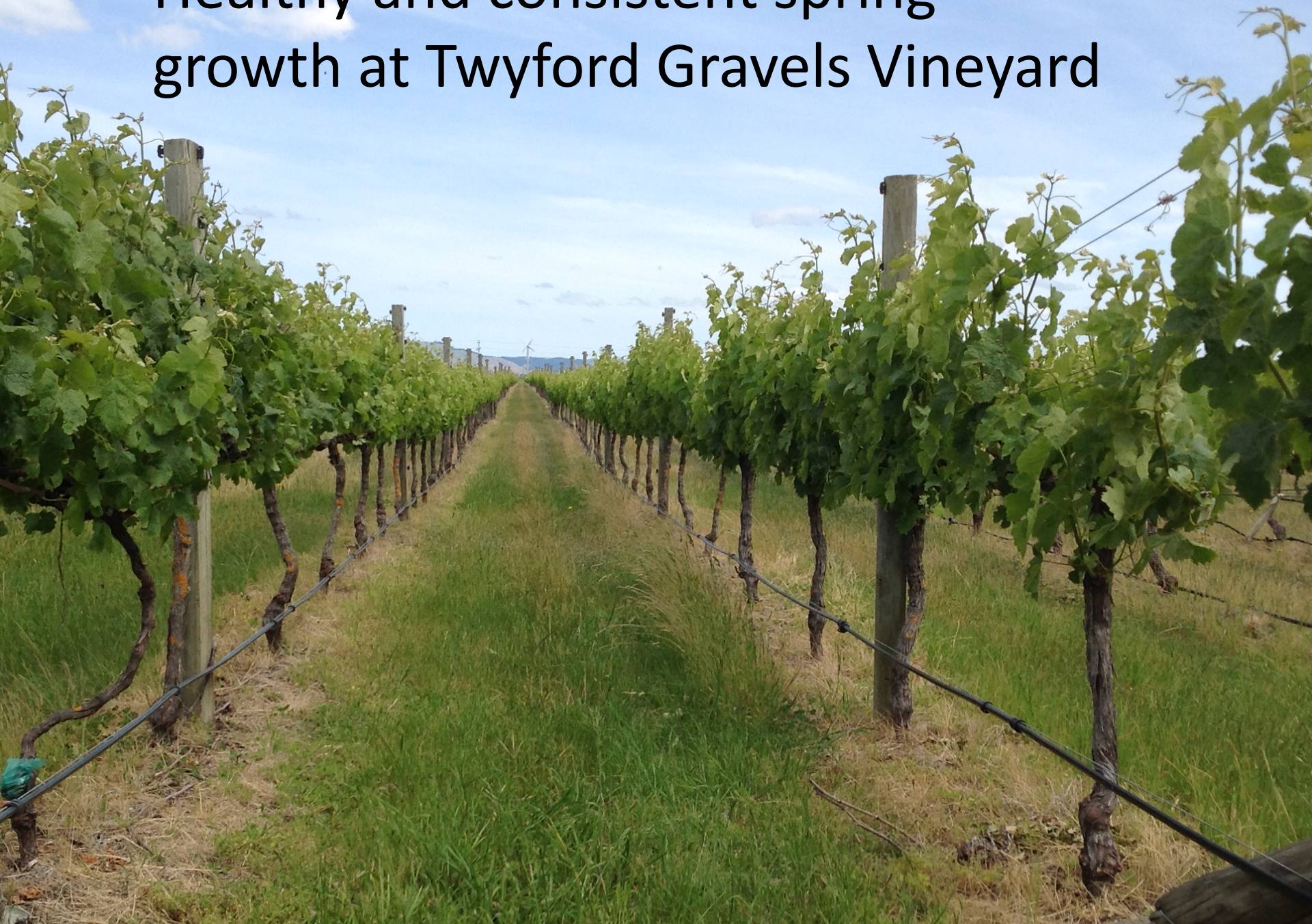


Healthy and consistent spring growth at Twyford Gravels Vineyard. Note the new wind machine in the background



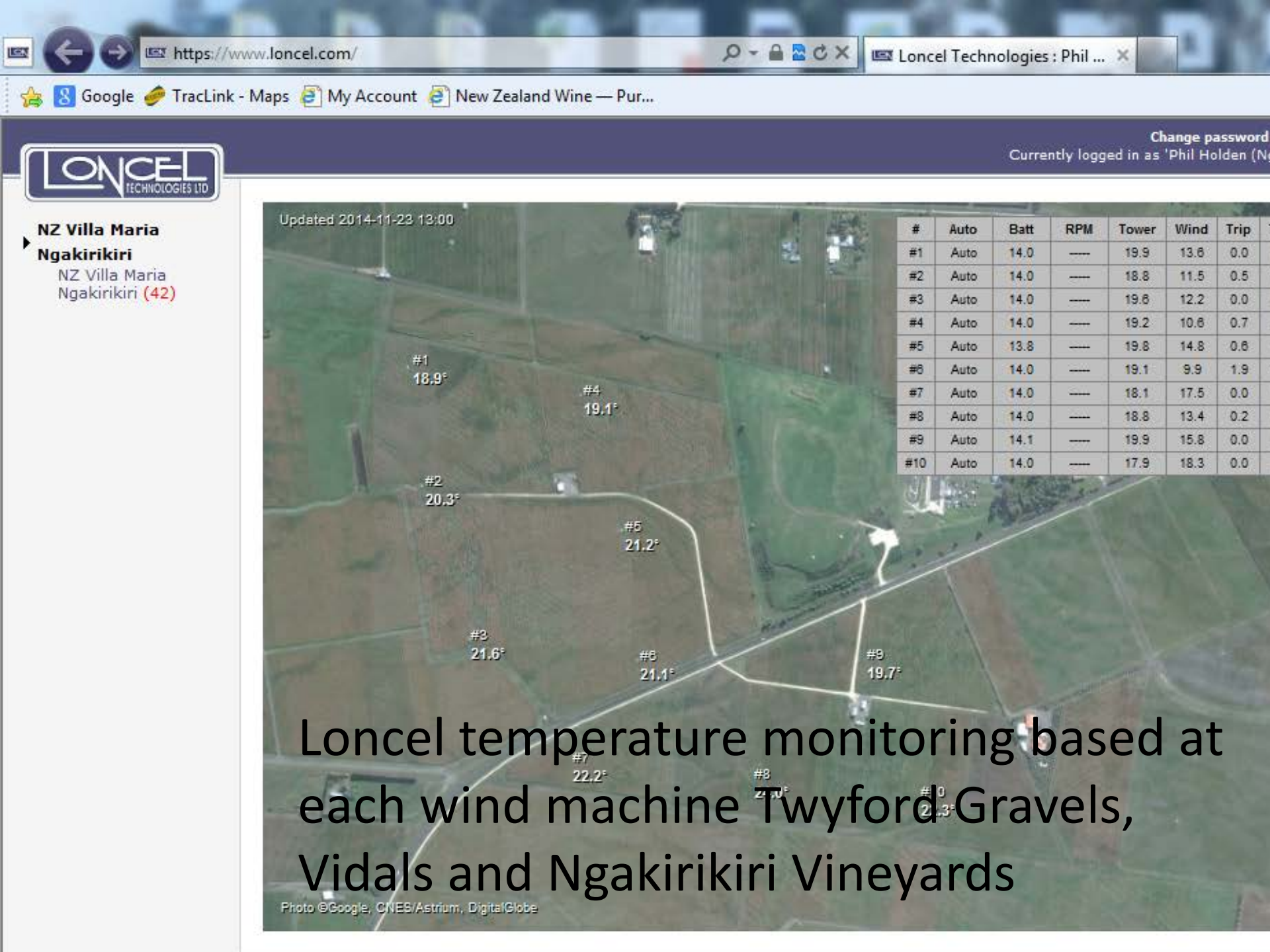
Healthy and consistent spring
growth at Twyford Gravels
Vineyard

Healthy and consistent spring growth at Twyford Gravels Vineyard





Healthy and consistent spring growth
at Twyford Gravels Vineyard



NZ Villa Maria
▶ **Ngakirikiri**
NZ Villa Maria
Ngakirikiri (42)

Loncel temperature monitoring based at
each wind machine Twyford Gravels,
Vidals and Ngakirikiri Vineyards



NZ Villa Maria
Ngakirikiri
 NZ Villa Maria
 Ngakirikiri (42)

Updated 2014-11-23 13:00

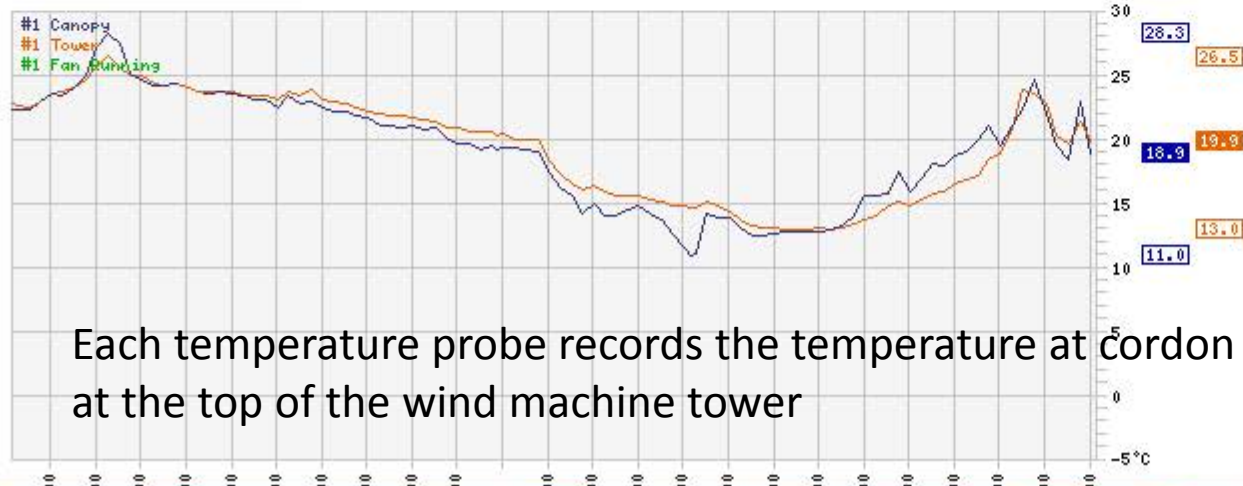


#	Auto	Batt	RPM	Tower	Wind	Trip
#1	Auto	14.0	----	19.9	13.6	0.0
#2	Auto	14.0	----	18.8	11.5	0.5
#3	Auto	14.0	----	19.6	12.2	0.0
#4	Auto	14.0	----	19.2	10.6	0.7
#5	Auto	13.8	----	19.8	14.8	0.6
#6	Auto	14.0	----	19.1	9.9	1.9
#7	Auto	14.0	----	18.1	17.5	0.0
#8	Auto	14.0	----	18.8	13.4	0.2
#9	Auto	14.1	----	19.9	15.8	0.0
#10	Auto	14.0	----	17.9	18.3	0.0

NZ Villa Maria Ngakirikiri : #1 Canopy :

Last 24 hours

spreadsheet:
3Mon|1Yr|2Yr



Each temperature probe records the temperature at cordon level and at the top of the wind machine tower



KELTERN VINEYARD



Two of Keltern's Key Staff-Hamish McGhie and Murray Goodall

Following Slide

The Keltern frost water intake in the foreground. The river changed course, meaning that the flow became too great to dam up the water to raise the high level high enough to get sufficient water to flow into the frost water intake.





A new channel in the riverbed was created.....no small feat!

Following two slides

The dam has been put into place across the river and the main flow of the river has been diverted into the new channel in the background. This enables the water level to build up high enough to fill the frost intake channel, so that there is enough water for frost protection.





The frost system was tested after being modified and reconnected.



The piles of remnant roots from the old vineyard



The ground was ripped in several directions to remove as much remnant root as possible before planting new vines





While the vineyard was removed, we took the opportunity to do some contouring to even out some of the ridges to make the vineyard easier to manage.



Installation of the frost
submain



Connected frost sprinkler



The newly planted chardonnay vines with a string and a spray guard irrigation lateral in place



Slow release fertiliser application
for the new chardonnay vines



The healthy and good consistent spring shoot growth of the Keltern Chardonnay



- HB Wine Awards
 - VM Single Vineyard Keltern Chardonnay 2013
 - Champion Wine of Show
- Air NZ Wine Awards
 - Champion Chardonnay (x2 Vidal Legacy)
 - Champion Wine of Show

More Air New Zealand Wine Award trophies

